

Video History Project

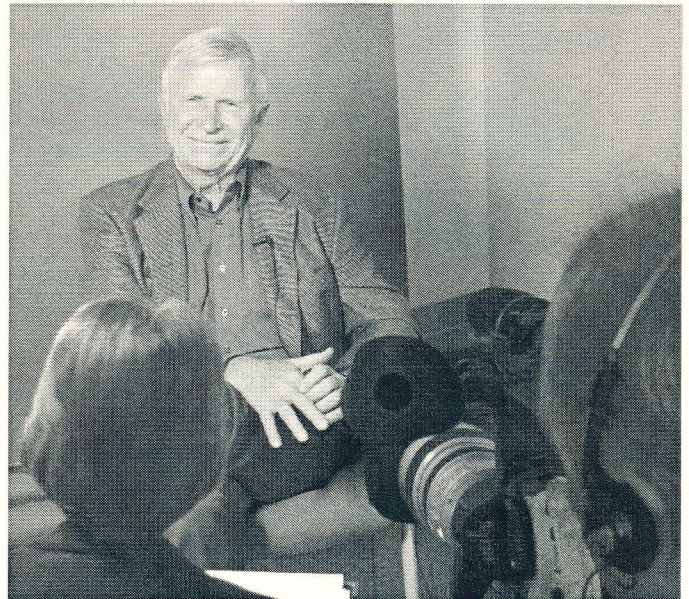
Members of the ASURA Living History Video Project Committee are seeking nominations for future interviews of retired/former employees of ASU who have a significant history with the University.



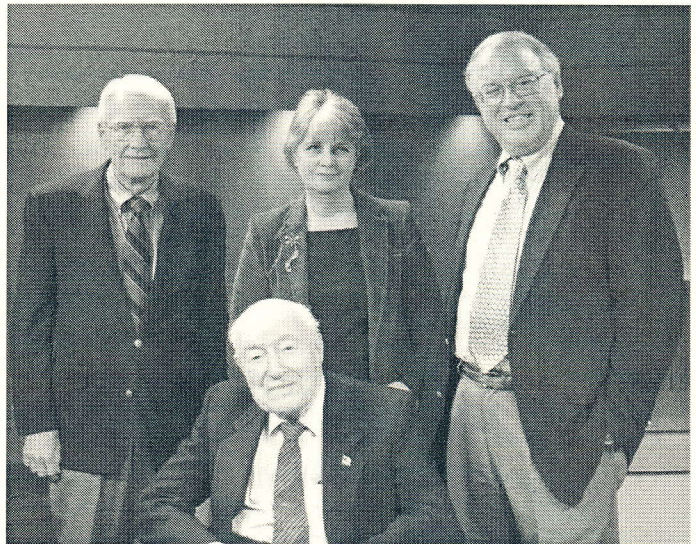
June Payne with Agave Production interviewer Pam Stevenson and photographer Manny Garcia

Thirty-three interviews have been completed since the Project's inception under ASURA former president Matthew Betz and the leadership of the Project's former chair, June Payne. Bob Francis now heads the Project. Examples of this year's completed interviews include: Charles Backus, Lattie Coor, Margaret Gisolo, Eugene Grigsby, Frank Kush, Beth Lessard, Eugene Lombardi, Gerry McSheffrey, Russell Nelson, Lonnie Ostrom, Frank Sackton, Rudy Turk and George Umberson.

Discussions are being held with ASU Archives to preserve the tapes and transcripts as a part of the ASU Libraries online catalog. Each interview contains a unique story from the individual's perspective regarding ASU and its history. A "roundtable discussion" with Brent Brown, Russell Nelson and Frank Sackton is also part of the videotape collection.



Lattie Coor being interviewed



Participating in Frank Sackton's video history interview session were Russell Nelson and Brent Brown, and interviewer Pam Stevenson.

Persons wishing to nominate an individual (or serve on the Living History Project Committee) are asked to contact the ASURA Office, P.O. Box 8782512, Tempe, AZ 85287, or telephone 480/965-7668.

ASURA Office, Officers and Committee Chairs

ASURA OFFICE

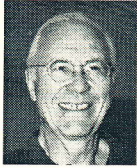


Corrine Irvan, Office
Coordinator and Business
Operations Manager
Mci212@imap1.asu.edu
(480) 965-7668
(480) 965-7807 fax

OFFICERS

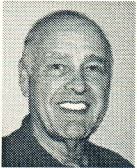
President

Alan Matheson
(480) 967-8500
alan.matheson@asu.edu



Past President

Elmer Gooding
(480) 831-2990
Elmer.Gooding@asu.edu



Vice President

Doug Johnson
(480) 965-6614
doug.johnson@asu.edu



Secretary

Maxine Laroux
480-966-9007
laroux@imap3.asu.edu



Treasurer

George Umberson
(480) 893-8250
george.umberson@asu.edu



COMMITTEE CHAIRS

Activities

June Bankhead
(480) 380 7670

Adopt-A-Family

Joan Leard
(480) 947-6119
jleard@asu.edu

Education

Joe Wilkinson
(480) 966-6986
joseph.wilkinson@asu.edu

Sue Blumer
(480) 948-6632

Cynthia.blumer@asu.edu

Insurance – ADOA

Dick Murra
(480) 821-0124
murra@cox.net

Insurance – ASRS

Doug Johnson
(480) 965-6614
doug.johnson@asu.edu

Legislative Liaison

Jerome Aronson
(480) 945-9078
jerrya@asu.edu

Website

Bob Beeman
(480) 967-7084
bobbbeemansr@juno.com

Membership

To be announced

Newsletter

David Scheatzle
(480) 967-9224
scheatzle@asu.edu

Judith Smith
(480) 860-1847
ips@asu.edu

Retirement System

Scott Norton
(480) 838 9138
scotnorton@asu.edu

Scholarship

Sue Blumer
(480) 948-6632
Cynthia.blumer@asu.edu

University Club Liaison

Zeke Prust
(480) 838 0511
zaprust2@juno.com

Volunteers

Marie Sale'
(480) 556 9305
marie.sale@asu.edu

ASURA Board of Directors and Ex-Officio Members

Terms Expire 4/2009

Matthew Betz
480-488-7954
mandjbetz@aol.com

Ted Carey
480-831-1653
cpcary@juno.com

Bob Francis
480-968-0535

Doug Johnson
480-965 6614
doug.johnson@asu.edu

Terms Expire 4/2008

Charles Backus
480-988-1201
cbackus@asu.edu

June Bankhead
480-380-7670

Maxine Laroux
480-966-9007
laroux@imap3.asu.edu

Joan Leard
480-947-6119
jleard@asu.edu

George Umberson
480-893-8250
george.umberson@asu.edu

Terms Expire 4/2007

Jerome Aronson
480 945-9078
jerrya@asu.edu

Stan Brown
480-380-1917

Elmer R. Gooding
480-831-2990
elmer.gooding@asu.edu

Alan Matheson
480-967-8500
alan.Matheson@asu.edu

Suzanne Steadman
480-966-9483
ssteadman@asu.edu

Ex-Officio Members

Susan Mattson
2005-06 Pres., Acad. Sen.
G Hall 116, MC 2202

Rick Martorano, for
Classified Staff Council
480-727-6485

Wilma Mathews,
Public Affairs
(480)727-6031

Sheree Barron, for
Human Resources
480-965-7878

Karen Hammann, for
Sr. VP / Provost
480-965-1224

Calendar of Events

Homecoming Block Party.....	Saturday, Oct. 21
ASURA Veterans' Day Golf Tournament	Friday, Nov. 2
MU Holiday Coffee	Tuesday, Dec. 5
ASURA Holiday Reception	Tuesday, Dec. 12
Retirees Day.....	Saturday, Feb. 17

Homecoming Block Party

This will be the third year that the Association will have a tent at the Homecoming weekend Block Party festival (thanks to the ASU Office of Public Affairs). It will be on the lawn in front of Old Main



between 10 AM and 1 PM on Saturday, October 21st. Bob Francis is again organizing the effort with refreshments and a team of hosts. It is a good place to "hang-out" near the parade route and visit with the many passers-by; acquaintances from our past days on campus – students, faculty, staff and alumni.

ASURA Office News

We have had some recent losses in our office staff. Doug Sanford, recently elected to our Board of Directors and the Thursday afternoon office volunteer, is relocating to California. Doug was an enthusiastic member since he retired. Also stepping down is Sheila Nienaber, our Friday afternoon office volunteer. She was instrumental in establishing and maintaining our email list. We will miss them both, greatly. So, we are looking for their replacements. If you would like to help us on a weekly basis, on either Thursday or Friday afternoon, please call the office at 480-965-7668. If you can on either Thursday or Friday afternoon, please leave a message.

It appears likely that the ASURA office will move to the ASU Community Service Building (near Curry Rd. and Van Buren) just after the first of the year. The future of the gold dome has not been resolved, but the Barrett Honors College Dorm Project sited on the Southeast corner of campus is scheduled to start next year.

A reminder: If you have not renewed your Association membership for 2006-07, please do so.

ASU Vets Day Golf Tournament

The **Legacy Golf Resort** at 32nd St. and Baseline Rd. will be the location of the Third Annual ASU Veteran's Day Tournament on **Friday morning, November 10th, 2006** with a **7:15 tee time**. Bobby Winkles will play again this year. The registration fee is \$85. If you are interested in receiving a registration form please call 480-965-7668. The tournament is open to ASU employees, retirees and alumni. Last year, 140 players participated and raised about \$18,000 for ASURA's Video History Project.

Travel Treasures

An Unusual Cruising Experience

We had an unusual experience during our last trip in June. We flew to Rome and after four days visiting sites in the city, we boarded a ship for a Mediterranean Cruise. We visited eight port cities, then one night, several hours after we left a Turkish port, the Cruise Director yelled "man over board." Next comes the command, "all hands on deck." They had spotted a person in the water and a speedy rescue boat was lowered. It turned out that many more persons were in the sea.

In fact, twenty-two were rescued and all had life jackets. We found out that a baby had drowned. The boat the rescued were in had sunk. The people were all refugees (Iraq, Greece, Somalia). The Captain was being a good guy and took them aboard and returned to the Turkish port. The port authorities would not allow the ship to enter. The UN became involved and embassy persons from five countries met with the Turkish government for many hours and finally the refugees were transferred to a waiting vessel. Apparently rescues happen quite often, but most ships contact freighters to pick up the people at sea. Because of this lengthy delay, we missed the port of Malta, but the historical viewing experiences were very memorable.

Zeke and Mary Ann Prust

Elderhostel with Grandchildren

My husband Chuck and I enjoyed an Elderhostel Intergenerational (grandparents and grandkids only) Program with our eldest grandson this past June. We are planning to take each grandchild (4 more to go) on a similar trip when they reach age 10.

The trip chosen was named "Ropes, Rafts and Rails" and was sponsored by the NAU Elderhostel. The program was six days and five nights. We were housed in a dormitory at NAU and shared a two bedroom suite with our grandson. Educational activities included outdoor survival skills, the geology of the Grand Canyon, an evening with an entomologist and lots of interesting bugs, and an evening with astronomers gazing at stars and planets through telescopes. Physical activities included outdoor games and puzzles to get acquainted with each other, a rock wall and ropes challenge course, hiking to the famous "horseshoe bend" of the Colorado River, rafting the Colorado River from Glen Canyon Dam to Lee's Ferry, riding the train from Williams to the Grand Canyon and hiking a short distance down the Bright Angel Train with a guide.

Our group was made up of 8 grandchildren and 12 grandparents. One set of grandparents said this was their 9th Intergenerational Elderhostel program and they have one more grandchild to go. One set of grandparents brought two grandchildren who were cousins and lived in different states.

It was a wonderful way to get some one-on-one time with our grandson. We're sure each of our grandchildren will be looking forward to their 10th birthday to take their trip with Grandma and Grandpa. For information on Elderhostel Intergeneration Programs simply go to <elderhostel.com> and click on "intergeneration" programs.

Judy Riden

YOUR NEWLY ELECTED BOARD MEMBERS

The following are short bios on members who have been elected to three-year terms (2005—2008) on our Board of Directors.

Ted Cary. Ted grew up in Northern Pennsylvania, graduated from Williamson High School, married his high school sweetheart 48 years ago and began a career in building construction. In 1977 the family including his wife Carol and four sons moved to Tempe Arizona. During his 27+ years at ASU Ted held various progressively responsible positions. He attended college nights and weekends earning a degree in Management. After retiring in 2005 from his position as Director of Capital Programs Management, he has stayed active as an Emeritus member of RMA & APPA.



Ted enjoys his family including 14 grandchildren and 2 great grandchildren and spending time at their summer home in Forest Lakes where he is a member of the Fire Department and part time ambulance driver. He also enjoys many hobbies including hiking, hunting and music.

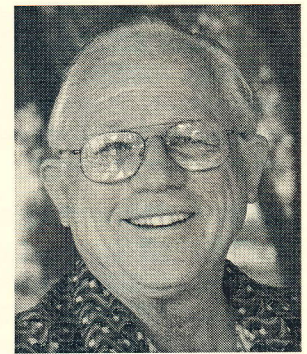
Bob Francis. Robert (Bob) Francis retired in June 2002 after 33 years of employment at ASU. An alumnus of ASU ('69 BA /Ed, '74 MA/Ed, '77 BA/Art), Bob assisted the ASU Retirees Association as its Homecoming Chair. He is currently serving as Chair of the Video History Project. While at ASU, Bob served as Assistant Director and Editor of the ASU Alumni Association in the early 1970's. Coordinator of New Student Programs (Orientation) from late 1970's to 1997 in Undergraduate Admissions, and as Executive Coordinator of Greek Life (fraternities and sororities) in Student Development from 1997-2002. Bob also served as advisor to ASU's Devils' Advocates student organization for almost 25 years (1971-1995).



Mat Betz. He is Emeritus Provost of ASU East (See previous article in Winter 2005 edition). He's also continuing his work with East Valley Partnership, Superstition Area Land Trust (President of Board), Southwest College of Naturopathic Medicine (member of the Governing Board), Arizona Academy of Science, Technology and the Arts (Founding Fellow and Officer of the Board), Mesa United Way, Wells Fargo Bank and Banner Baywood Hospital and ASU Retirees Association. He's also the incoming president of the ASU Research Park Board.



Doug Johnson. Douglas A. Johnson joined Arizona State University in 1974 and continues as a Professor of Accountancy. His primary teaching interests are in managerial and cost accounting. He earned his B.B.A. and Ph.D. degrees from the University Texas at Austin. His publications have appeared in a wide variety of journals including the Journal of Accounting Research, Auditing, Journal of Accountancy and Management Accounting..



He has been active in the development of graduate programs in the W.P. Carey School of Business. He is a past president of the Scottsdale Chapter the Institute of Management Accountants.

Doug is a Past President of the Academic Senate and Assembly and has worked extensively to improve health insurance and retirement benefits for the university community. Dr. Johnson's wife Peggy is a retired faculty member from Mesa Community College. and they have two daughters. Doug's other activities include golf, bicycling, hiking, and bridge.

What's in a Name?

As sciences evolve, discoveries cast aside old theories, and new challenges confront us, academic departments and structures re-define themselves to be successful.

Nowhere is this more evident than in the ASU College of Liberal Arts & Sciences (CLAS) which continues to re-invent itself to meet more demands.

There are now nine schools within CLAS, three of them new this semester.

The School of Earth and Space Exploration brings together fusion and geology with system engineering to produce a new generation of explorers who are part scientist and part engineer.

The School of Social and Family Dynamics is the result of a merger between programs from two previously separate departments: family and human development and sociology. This new school plans to be an international leader in the trans-disciplinary study and advancement of children, youth, families, cultures and societies.

The School of Materials is a collaborative effort between CLAS and the Ira A. Fulton School of Engineering and includes the Center for Solid State Science. Studies will cover the science and engineering of metals, ceramics, polymers, composites and functional materials.

Additionally, CLAS has three new interdisciplinary research centers now open.

(Continued on page 11)

TREASURES IN THE LIBRARY

Chicana/o Research Collection

The Chicano Studies Collection, its early title, was established in 1970 to serve the instruction and research needs of Chicano students and faculty in higher education by obtaining works by and about Mexican Americans or Chicanos in the United States and to develop a separate library collection. In its formative years, the Chicano Studies Collection was a circulating collection of books representing the current thought and philosophy of the so-called Chicano Movement, as well as reflecting Mexican American history, culture, language, traditions, heritage and ethnicity.

Coincidentally, in 1970 a student named Christine Marin, a native of Globe, began working as a student assistant in the Acquisitions Department at Hayden Library. Quickly, her name became permanently entwined with the Chicano Collection as it became an expanding collection of books, newspapers, periodicals, microforms and ephemera, with strengths in Chicano literature, 20th century Chicano history, bilingual education, civil rights movements and Chicana feminist expression. These items, now non-circulating, can be accessed via ASU's online catalog and can be viewed in the Luhrs Reading Room. In 1989 the main focus of the Collection shifted to primary sources about Chicanos in the Southwest and the new name, Chicana/o Research Collection was adopted. Christine Marin, now with a Ph.D., serves as Curator, Archivist/Historian.

For a thorough description of the Collection's holdings, its reference tools and its research opportunities, go to: www.asu.edu/lib/archives/chicano.htm or simply www.asu.edu/lib/archives/ then selecting Chicana/o Research Collection. A menu of useful links on this web page include: Collections Held; a Timeline of Mexican American events in Arizona, 1864-1985; Primary Sources in Mining and Labor which are held in the Arizona and Chicano Collections; and the Mexican American Index, part of ASU's Special Materials Index. This latter searchable index contains materials from the 1900s on, including ephemeral items, photographs, biographies, reports, pamphlets and articles from a wide variety of publications.

Manuscript collections are the backbone of the CRC. Of particular interest locally are the Ed Pastor Papers that contain information on Arizona's United States Congressman from the 4th District who took office in 1991, including records from Pastor's political career dating back to 1977. His years as a member of the Maricopa County Board of Supervisors are richly documented.

For a detailed look at some of CRC's manuscript collection holdings, finding aids to eighteen CRC collections have been added to The Arizona Archives Online Project. Go to: <http://aao.lib.asu.edu> to access these guides. Arizona Archives Online, an ongoing endeavor, was created as a joint project between ASU, Northern Arizona University and The University of Arizona. The initial goal was to make finding aids for archival collections at each university accessible to scholars worldwide, and searchable through a single web site. Of course, traditional paper copies of finding aids to CRC's

manuscript collections can be viewed in the Luhrs Reading Room.

In addition, the Chicana/o Research Collection possesses one of the finest collections of Mexican American images in the Southwest. For example, The Los Mineros Collection details the working conditions and labor struggles of Mexican American laborers in the copper mines of Arizona and New Mexico. Many of these images were used in the 1991 documentary, "Los Mineros," produced by Hector Galan for the American Experience series on PBS. This video recording is available for viewing in the Chicano Collection, and circulating copies may be found at Hayden Lower Level and at (ASU) West Media.

Curator Christine Marin reports that local students frequently request information on the history of Mexican Americans in their own communities of Phoenix, Globe, Tempe, etc. Popular topics requested by the general public include the subjects of immigration, bilingual education and migrant labor. International students and researchers seek information about Chicano literature and Chicano writers. Requests accelerate around the time of Cinco de Mayo and September 16th, and include questions from teachers about how Mexican Americans celebrate these holidays, and "do you loan materials?" [No!]

Rather than visiting the Library in person, one can experience the richness of this collection online. Three online exhibits using materials from the Chicana/o Research Collection can be seen at: www.au.edu/lib/archives/exhibits.htm.

"The Chicano/Chicana Experience" was assembled in 1999 to describe, illustrate and present historic images and documents that tell the story of Mexican Americans and their contributions to the history of Arizona. The exhibit opens with a poem by Alberto Rios, a Regents' Professor and Katharine C. Turner Distinguished Chair in English at ASU, entitled "The Day of the Refugios."

"La Chicana: A Celebratory Essay describes the real-life experiences of Mexican American women in their work, play and community, from the turn of the century to modern times.

"Sonora, Arizona, 1907-1965," an exhibit prepared in 2002, describes the town which was located one mile south of Ray and documents organized mining labor and segregated employee housing. In the early 1900s, Mexican and American workers and their families came to the Arizona region to work for the Ray Consolidated Copper Company and founded the town of Sonora in 1907. The residential segregation imposed by the company was the norm for that era. Euro-Americans lived in Ray; Mexicans and Mexican Americans lived in Sonora; and Spaniards lived in nearby Barcelona. The low grade copper ore was extracted by underground mining, a method that became costly, outdated and inefficient over the years. By 1948 Kennecott Copper Company began open pit mining in the nearby town of Ray, signaling the demise of the town of Sonora. Kennecott razed the town in 1965.

In conclusion, readers can browse the links cited in this article for a relaxing, educational and enjoyable experience. The Chicana/o Research Collection is located in the Luhrs Reading Room, Level 4 of the Charles Trumbull Hayden Library.

Carol Moore, Retired – Archives and Special Collections

HEALTH INSURANCE

Open Enrollment Brochures Mailed

By now all retirees should have received the Open Enrollment Brochures from the Department of Administration and/or from the Arizona State Retirement System.

When State of Arizona employees retired from active service they had the opportunity to retain their Health and Dental Insurance with the Department of Administration. If the retiree has retained the ADOA Benefit Options coverage they should have received an Open Enrollment Brochure from ADOA. If they are drawing a retirement benefit from the State they should have also received an Open Enrollment Brochure from the ASRS. If the retiree desires to retain coverage under the plans offered by ADOA, the ASRS brochure can be ignored. The retiree does have the option to switch coverage from ADOA to ASRS. If the retiree elects to make the switch the retiree can not return to ADOA coverage in the future. Advise ADOA if you switch.

Retirees who are drawing a retirement benefit from the state should have also have received an Open Enrollment brochure from the ASRS if they meet eligibility criteria. If the retiree is not enrolled in an ADOA plan they will not have received the ADOA open enrollment brochure.

If you have not received an open enrollment packet from the appropriate agency you should advise the agency so that a copy can be provided to you.

There are significant changes in programs offered by both agencies which may require you to re-enroll. Don't ignore the Health and Dental benefits that have been made available to you.

Dick Murra

ADOA Pacificare Open Enrollment for CY 2007

ASURA Eligible members who are enrolled in or contemplating enrolling in PacifiCare Secure Horizons Plan for CY 2007 should make every effort to understand the plan options that are being offered for the new plan year and the differences in coverage. In the newsletter, Read Me First, it told you that if you did not want to make a change you did not have to do anything.

For PacifiCare enrolled members that is not the case. Two new plans are being offered as defined on page 39 of the OE Brochure. If you do nothing you will be enrolled in the high option plan with the large increase in premium. If you elect the low option plan you will experience an increase in many of the benefit co-pays. You owe it to yourself to learn all you can about the new plans being offered.

Prescription co-pays are also changed for the low option

Eligible members who are not covered by Medicare should call PacifiCare and ask for a Providers Directory. It is different from the directory offered by Secure Horizons for members with Medicare. While talking with a PacifiCare Representative also ask for the schedule of benefits that will apply to members not on Medicare. The plan in which you

will be enrolled is an EPO plan. Also ask where you can find the formulary for non-Medicare members

Members and their eligible dependents who are currently enrolled or contemplating enrolling in the Medicare Advantage Plan (Secure Horizon) should study the information provided in the open enrollment brochure, attend one of the scheduled meetings if possible, or clarify all of their questions by telephone with a PacifiCare representative (1-800-347-8600).

Select the plan that is best for you. Look at the EPO plans for the other programs compare premiums and benefit coverage. Make the selection based on what plan best meets your needs with a premium that is right for you.

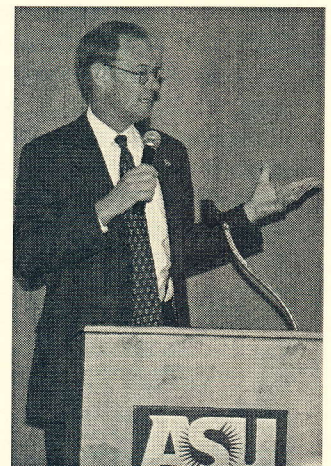
Dick Murra

Our Fifteenth Birthday

Our Association's Annual Meeting, that also celebrated our birthday, was held on April 20th with our first president, Bob Ellis (1991-92), attending. Elmer Gooding, our 15th President thanked the volunteers of the organization for their help during this past year and cut the Anniversary cake with the help of Martha Waltemath, who, once again, arranged the excellent event.

The speaker was Arizona Attorney General Terry Goddard who spoke on the many kinds of fraud and scams that our members should be aware of. His remarks included excellent advice on how to avoid identity theft and other schemes that dishonest people use to prey on older adults. Board member George Umberson arranged for the ten members of the Herberger choral singers to entertain us; a lively start to our program!.

Lastly, Elmer Gooding passed the presidential gavel to incoming President Alan Matheson for the 2006-2007 year.



Arizona Attorney General Terry Goddard addresses Annual Meeting



Martha Waltemath and Elmer Gooding cut our 15th anniversary cake

**LEGISLATIVE LIAISON COUNCIL --
Our Eyes and Ears at the State Capitol**

Some Thoughts Following Adjournment of the 47th Legislature

Looking back at the recently adjourned Second Regular Session of the 47th Legislature, it appears that ASU (and the other universities) and State employees emerged as winners. This offers no consolation to a large number of ASRS retirees who, for the first time in several years, will receive no increase in their pension benefit. It appears that many retirees have some misconceptions concerning the basis for their situation versus that of active (i.e., still working) State employees and this is addressed below.

The University will be receiving a substantial budgetary increase in support of enrollment growth, new construction, and repair and refurbishment of existing facilities along with an initial investment in Biomedical Informatics. There is also a sizable discretionary adjustment to the base budget along with increases to underwrite the employee pay package (salaries and employee related expenses). The pay increase passed by the Legislature will increase compensation by 6.3% on average. University employees will receive a mandated increase of \$1650 with the possibility of an additional adjustment based on performance (merit).

In sharp contrast after more than 10 years during which retired ASRS members have received annual increases to their pensions, these retirees are confronted with the harsh reality that there will be no increase for the 2006-2007 fiscal year. Moreover, ASRS projections indicate that it could take several years before such increases resume. Some members have mistakenly assumed that these past increases were cost-of-living adjustments (COLA). The fact is that the ASRS Defined Benefit Retirement Plan makes no provision for COLA in contrast with, for example, the Federal Social Security program. What ASRS members have been receiving are termed *permanent benefit increases* (PBI's). A PBI, as the term suggests, is a permanent adjustment of the pension benefit but it is not a mandatory adjustment. The ASRS Board of Directors has authority to distribute PBI's whenever "funds for a PBI are generated by excess earnings on the actuarial value of assets of the ASRS investment fund" (ASRS, Special Notice, May 25, 2006). In other words, when the fund shows gains greater than the targeted amount of 8% sustained over a number of years, there may be sufficient surplus to fund PBI's. In this regard, it is instructive to review the ASRS investment experience over approximately two prior decades (see table). From FY 1982-83 through FY 1999-00 ASRS investments, in most years, appreciated at levels well above the 8% expectation and, at times, in spectacular fashion. These aggregate investment returns have provided the surplus that allowed ASRS to pay for PBI's until now. What has occurred to change the landscape? The short and simple answer is that the investment fund has run out of surplus. But a more informative explanation involves consideration of two factors. The first is the poor investment yields over the fiscal years 2000-01 through 2002-03. Since domestic and foreign common stocks comprise the largest asset class in the ASRS portfolio (as is the case with most, if not all, retirement funds), the fund is vulnerable to stock market down-turns. While

Fiscal Year Annualized Rates of Return¹

Fiscal Year	Return--%	Fiscal Year	Return--%
2004-05	8.5	1991-92	14.6
2003-04	17.5	1990-91	8.0
2002-03	2.4	1989-90	9.5
2001-02	(8.2)	1988-89	14.3
2000-01	(6.7)	1987-88	3.1
1999-00	10.0	1986-87	11.8
1998-99	16.8	1985-86	31.5
1997-98	21.3	1984-85	32.1
1996-97	20.6	1983-84	(5.2)
1995-96	16.7	1982-83	40.3
1994-95	17.8	1981-82	2.4
1993-94	1.9	1980-81	5.0
1992-93	16.7	---	---

¹Table contents are reproduced from ASRS Fact Sheet, February, 2006.

Fund diversification can buffer some losses, no one knows when or to what extent such market events will occur. Investment gains since FY 2001-02 are insufficient to sustain continuing PBI's. The second factor contributing to the demise of PBI's is less obvious. As the ASRS investments produced increasing surpluses during 1982-2000, political pressures secured sizable reductions in ASRS contribution rates which fell to approximately 3%. This reduction in personnel costs was highly popular with many employers, but over time the effect has amounted to subsidization of both employer and employee contributions with ASRS Investment Fund surpluses. While the State Legislature has a history of frugality, average salaries nevertheless increased as contribution rates decreased! Since a retiree's benefit calculation is based in part on average salary during the highest salary years (as opposed to the sum contributed and it's appreciation through investment), many pension benefits currently being paid and more to come have not been funded adequately by contributions and their irrevocably lost investment earnings potential. Active members and retirees can not be faulted for this situation as they are not the ones setting contribution rates, but they are the ones taking the "hits"—escalating contributions for the former and deferred PBI's for the latter. In short, pay increases for active members of ASRS come by means of legislative appropriation from the State General

(Continued on next page)

Fund which enjoys a healthy surplus. Indeed this past Legislature was able to be generous with the universities and all State employees and, at the same time reduce taxes. But benefit payments to retirees must come from the Retirement System Fund which can pay PBI's only after meeting contractual obligations (continuing and new pensions).

While matters discussed above have held center stage, there were a number of proposals during the recent session of the Legislature that can significantly impact both active and retired ASRS members. First of all, we can all breathe easier with the passage of HB2113, extending to July 1, 2016 the statutory life of the ASRS Board and Director. After repeated failures, a spousal notification bill (HB2082) was passed. This legislation requires that, if a member's contingent annuitant is his/her current spouse, he/she shall notify the spouse before naming a new contingent annuitant. This bill was supported by ASURA and lobbyists Alan Johnson and Bob Mings helped secure its passage. Johnson and Mings, in collaboration with members of the Coalition of Arizona Retiree Associations, worked in support of a graded multiplier equity bill (HB2390). This proposal sought benefit adjustments for pre-2001 retirees who do not benefit from the *graded* multiplier used in the calculation for members who retired later. The bill failed for a second time, but is likely to be reintroduced in the next session. Over the past year, it has been ASURA Board policy to actively support ASRS-favored legislation whenever such legislation has no negative impact on retirees but would strengthen the financial condition of ASRS. The following three legislative proposals fall into this category.

HB2340 which passed repeals ARS 38-748, an enactment that provided a deferred retirement option (DROP Plan) and a potential unfunded liability for ASRS. Its repeal eliminates a cost avoidance of \$540 million in liability to ASRS which is the equivalent of 0.30% that employers and employees would have had to pay in contributions.

SB1167 which passed provides that after benefits begin, a state retiree may exercise a one-time election to rescind a joint and survivor annuity option or period certain and life annuity option if the originally-named contingent annuitant dies or ceases to be the contingent annuitant as the result of a qualified domestic relations order. Currently a retiree can make such changes without limitation and has led to costly abuses of the retirement program. ASRS estimates a savings of up to 0.36% in rates for both employers and employees.

HB2101 which was the most contentious of the three proposals failed in the Senate. If passed, it would have prohibited a refund of employer contributions to a terminating employee. Currently ASRS loses the investment potential of a considerable sum in the form of refunded employer contributions. Most states and the cities of Phoenix and Tucson do not allow employer contribution refunds. If this measure can be passed in the next legislative session, it would, over time, reduce employer and employee rates by 0.125%.



Jerry Aronsen

Kinzle and Castillo: Miracle Workers DeLuxe

Relatively few of today's Sun Devil fans could come up with the answer to this question: What was the first sport to bring national fame to Arizona State?

The answer: Track and field.

It all started in 1941 when Donn Kinzle, a former Duke University track star and third-ranked high hurdler in America, enrolled at Arizona State Teachers College at Tempe and immediately broke Border Conference track records in several events. When he returned in 1946 from World War II service with the Royal Canadian Air Force, he took over as track coach and won the first of five straight conference team championships. His ace recruit, Bill Miller of New Jersey, captured the NCAA javelin title and was a national star in the grueling decathlon. Several of his Sun Devil athletes went on to NCAA and Olympic glory. And Earl Putman of Ohio, the college's first 300 pounder, was a famed shot put and discus man and later a professional football lineman.

Early in 1947 Kinzle built one of America's fastest cinder tracks in Goodwin Stadium, talking Santa Fe Railway officials into donating the cinders. Mel Patton of USC, then the "world's fastest human," ran some of his best dash times on that track, and an ASU foursome later broke a national record in the mile relay there.

Kinzle was more than a successful recruiter of national and international athletes.

A tireless showman, he made track and field meets thrilling spectator events. For the first time, ASU meets were televised under the Goodwin Stadium lights before steadily growing crowds. Arizona State athletes brought glory to their college in the Drake Relays, NCAA championships and other nationally prominent events.

One of Kinzle's smartest moves was to hire Senon (Baldy) Castillo as his assistant. Castillo succeeded his boss as head track and field coach after the 1952 season and proceeded to build one championship team after another.

Castillo first attracted media attention as a multi-sports star at Phoenix Union High School and Phoenix College. He demonstrated his coaching and recruiting skills soon after becoming Arizona State's head coach. His first squad won the conference championship and his 1954 team repeated that performance. By that time, the Sun Devils had gained recognition as one of the nation's premier performers.

In 1963 Castillo's mile relay team, composed of Mike Barrick, Henry Carr, Ron Freeman and Ullis Williams, broke the world record in that event with a time of 3:04.5.

Castillo's crowning achievement came in 1977 when his team won the NCAA national championship.

During his 27 years as head coach at ASU he coached 13 Olympic performers, 34 All-Americans, and 10 national champions. His amazing record earned him induction into the U.S. Track and Field Federation's Hall of Fame in the year 2000.

Dean Smith

Obits

Volunteers, including Becky Reiss and Patty Kelly, regularly read obituary notices in the two local newspapers looking for items about retirees, their spouses, current ASU employees and ASU affiliates. Some may be missed because ASU is not mentioned in the article. Please call or write to us if you know of someone whose death should be reported in Prime Times. We would like to have name, age, city of residence, date of death, and ASU department and title. Survivors should include names of spouse and children, if possible. Notices in this issue include all of those received since the last issue through January 8, 2006.

Virgil Baker, 91, died January 13. He was a professor emeritus of geography and a former chair of ASU's Department of Geography. Baker came to ASU in 1955 and taught in the Department of Geology until 1960, then in Geography for the 1960-61 school year and then again from 1966-1978 when he retired.

Terrill Dean "Terry" Becker, Sr., 62, passed away on January 3, 2006. He worked as a facilities engineer with ASU Foundation. Donations may be made to the American Heart Association or the American Lung Association.

Diane Snodgrass Bickford, 61, died on February 27, 2006. She is survived by her husband, Bill, who was a professor at ASU and other relatives. Donations may be made to either Hospice of the Valley or the Susan G. Komen Breast Cancer Foundation.

Orley Jay Bradshaw, 82, passed away July 30, 2006. Orley was retired from Information Resources Management of Computing Services at ASU.

Grace Hekman Bruinsma, 89, passed away on March 30, 2006. Memorials can be sent to: Henry Bruinsma Family Scholarship, c/o Calvin College Development, 3201 Burton Street, S.E., Grand Rapids, MI 49546.

Dr. Charles Ray Campbell, 69, passed away on June 26, 2006. Dr. Campbell received his Bachelors degree in Health Science from other institutions and then did his graduate studies at ASU. He taught courses at Phoenix College, Embry Riddle and ASU until he retired in 1997.

Kenneth Lyle Carpenter, 84, passed away on March 4, 2006. In 1963 he retired from the Army with the rank of Major. In 1983 he retired from ASU in his second career as a research and grants contract administrator. Memorials may be given to Shepherd of the Pines Lutheran Church, 507 W. Wade Lane, Payson, Arizona.

James Case (66) died Jan. 31. He taught in the Department of Speech and Hearing Science at ASU from 1969 until he retired in 2001. Upon his retirement, the Department of Speech and Hearing Science established the James Case Speech and Hearing Scholarship. Memorial donations can be made to the scholarship. To donate, make a check payable to the ASU Foundation, and send it to: Department of Speech and Hearing Science, P.O. Box 870102, ASU, Tempe, AZ 85287-0102.

William A. 'Daddy B. Billy' Cavalliere, 93, Professor Emeritus, passed away on July 26, 2006. After receiving a Bachelors in Education and a Masters in Education at ASU, he

began teaching at ASU in 1945 in the Technology and Applied Sciences Department. He became a Professor Emeritus in 1978. Memorial contributions may be made in his memory to Hospice of the Valley, 1510 E. Flower St., Phoenix, AZ 85014.

Eva Pauline Conn, 71, passed away June 23, 2006. Pauline was a secretary for the ASU athletic department for many years. Interment was at National Memorial Cemetery of Arizona.

Alfred E. Dittert, Jr., 84, passed away June 16, 2006. In 1967 he joined the faculty in the Department of Anthropology at ASU until his retirement in 1987, when he received Emeritus status. Donations may be sent to the Sky City Cultural Center, PO Box 310, Acoma Pueblo, New Mexico 87034, attention: Brian Vallo.

Ann D. Elmore, 88, wife of James W. Elmore (founding Dean of Architecture), passed away on February 22, 2006.

Sarah (Sally) Jane Flanagan passed away on June 26, 2006. Sarah worked for several years in the Dance Department at ASU. Donations in her memory may be made to the National Organization for Rare Disorders (NORD) 55 Kenosia Ave. PO Box 1968, Danbury, CT 06813.

Gesford H. Francis, 77, passed away on May 18, 2006. In addition to several official positions he held in the business community, he was a visionary of the ASU West Campus. Donations may be made to ASU West general scholarship fund.

Sharon Harkey Fry, 75, passed away recently. Sharon obtained her Master of Music Education degree at ASU, then ASC, in Tempe. She was a Teaching Assistant, Concertmaster of the orchestra and performed as a soloist. In 1956 she joined the Phoenix Symphony Orchestra. During her career she taught music in Phoenix and Mesa Public schools, Mesa Community College and violin at ASU.

Dr. Philip D. Gaffney, 88, passed away March 18, 2006. In 1957 he joined ASU as Professor of Educational Psychology. Dr. Gaffney received many awards and honors for work in the field of mental retardation, authored nine professional publications, and served on the board of directors for over 30 professional associations and councils.

Tom Handy, 62, passed away May 1, 2006. He moved to Arizona in 1984 and became an Area Supervisor for Facilities Management at ASU until his medical leave in 2001. Contributions may be made to: King of Glory Lutheran Church or the American Heart Association, 7272 Greenville Ave., Dallas, TX 75231-4596

John David "Chip" Harris died Thursday, July 13, 2006. Chip was an Adjunct Professor of Law at ASU. Donations may be made to any of the following charitable organizations:

1. Ryan C. Harris Learning Center at the University of Dayton 300 College Park Dayton, Ohio 45469-1681 In memory of John "Chip" Harris; checks payable to: University of Dayton;
2. Scottsdale Healthcare Foundation 10001 N. 92nd Street, Suite 121 Scottsdale, Arizona 85258 Tel: 480-882-4517 In Healthcare Foundation or give online:

www.shc.org/foundation/givenow; 3. Brophy College Preparatory Brophy Community Foundation 4701 N. Central Avenue Phoenix, Arizona 85012-1723 In memory of John "Chip" Harris; 4. ASU Foundation Sandra Day O'Connor College of Law Attention: Marilyn Seymann/Assistant Dean P.O. Box 877906 Tempe, Arizona 85287-7906 Tel: 480-727-6979 or give online: www.law.asu.edu/gift.

Don Hopfer, 52, passed away March 30, 2006. Don was a KAET-TV volunteer and then became a full-time employee in 1977. He spent over 25 years at KAET producing programs, mentoring ASU students and creating "cutting edge" television. Donations may be sent to Desert Mountain States Chapter of the Leukemia & Lymphoma Society, 3877 N. 7th St, Suite 300, Phoenix, AZ 85014.

Joan P. Katzenberger, 67, passed away June 6, 2006. She taught at ASU in the College of Nursing.

Gerald D. "Gary" Huston, 75, died February 19, 2006. In 1962 he became a professor and faculty member of the ASU College of Business until he retired in 1995. Donations may be made to the Nature Conservancy, 7500 N. Dreamy Draw Dr. Phoenix, AZ 85020 or the Pipe Organ Fund at Tempe 1st United Methodist Church.

James Robert Kearney III, Professor Emeritus, ASU, passed away January 13, 2006. Dr. Kearney taught history for 30 years at ASU. Donations may be made in his memory to: STARS (Scottsdale Training and Rehabilitation Services), 7507 E. Osborn Rd., Scottsdale, AZ 85251.

Dr. Reinhold R. Kiermayr, 70, passed away on April 30, 2006. After retiring from military service in 1975, he moved to Tempe, Arizona, and received a Doctorate from ASU in 1983. He was a history professor at Glendale Community College for 19 years and also taught classes at ASU-West. The Dr. Reinhold R. Kiermayr Memorial Scholarship has been established by the family at Glendale Community College. Donations may be made to the scholarship fund. Checks may be made to MCC Foundation, Mail to MCC Foundation, Glendale Community College, 6000 W. Olive Avenue, Glendale, AZ 85312. In the memo section of the check write Kiermayr Scholarship.

Dr. Sherwin ("Jay") Klein, 87, passed away on March 12, 2006. After retiring in 1987 from Wright State University, he moved to Sun Lakes, Arizona. ASU asked him to be an adjunct professor, a position he held until age 80.

Jean Guettel Mayer, 84, passed away on May 23, 2006. She was preceded in death by her husband, Dr. Albert Mayer, a Professor of Sociology at ASU. Jean received a Master of Counseling from ASU and from 1978-1992 served as the first Director of the Senior Adult Program at Phoenix College.

Robbie A. McFee, 59, passed away January 23, 2006. She worked for Sodexo at ASU.

Roderick L. McIntire, 88, "Rod," died on April 20. Rod, an electronics engineer, moved to Arizona in 1963, where he was employed at the electronics laboratory of the College of Engineering, ASU from 1965 until his retirement.

Stephen Henry McKinley passed away on January 22, 2006. He was an employee of ASU's Facilities Management for over 10 years.

Verleen Mae Mathis Melton, 73, passed away on January 22, 2006. Verleen worked for ASU for 20 years. Contributions may be made to Canyon Ridge Bible Church.

Icea E. Moore, 83 died April 5, 2006. Icea was employed by ASU where she worked until her retirement. Memorial contributions are suggested to St Mary's Food Bank, 2831 N. 31st Avenue, Phoenix, AZ 85009. (Karlo-Feucht, 330-494-9644).

Paula Morris Nemeth, 67, passed away on January 14, 2006. Paula retired from ASU in 2003 after many years of dedicated service at the College of Law. Memorial contributions can be made to Hospice of the Valley, 1510 E. Flower Street, Phoenix, AZ 85014.

Roberta Thomas Overman (Mrs. Glenn Overman), 88, wife of the ASU College of Business Dean, Glenn Overman, died Tuesday, April 11. Roberta was a tireless worker for ASU and the community. Contributions may be made to: ASU Foundation for W.P. Carey School of Business, ASU, PO Box 873506, Tempe, AZ 85287-3506 or to First United Methodist Church.

Thomas P. Papandrew (91) died on April 27, 2006. He worked as a construction estimator at several firms until his retirement in 1977, and then assumed a teaching position at ASU in the construction department for several years.

Margaret Lorena Perril, 96, passed away on July 29, 2006. She and her husband Lester moved to Phoenix in 1956 where Dr. Perril was a professor at ASU. She taught elementary school in South Phoenix until they retired in 1975.

Mara Pinckard, 65, died April 28, 2006. In 1982 she began her nearly two decade career as Head of Science Reference at the Noble Science and Engineering Library at ASU. She retired in 1999.

Kern Poyner, 46, KAET's manager of information technology, died Feb. 2. He had worked at KAET since 1999, where his responsibilities included technical planning, management, and operations of all computer systems and digital (DTV) station operations. He was a key contributor for the station's digital conversion in 2001, and served on the national Technology Steering Committee. Contributions are suggested to the Kern Poyner Family Fund at Chase Bank, account number 712730100. For additional information, call (480) 890-6730.

Norma Alice Price, author, religious leader, mother and wife, passed from this life on September 30, 2006. In 1943, she married Thornton Walton Price, Jr., who had a long academic career that concluded in a professorship in the Mechanical Engineering Department at Arizona State University. Norma and Thornton had three children: Thornton died in 1991. The Price family were among the founding members of the Tempe Religious Society of Friends (Quakers).

Robert E. (Scotty) Reed, 87 died June 4, 2006. Following a military career, he lived in Tempe for more than 50 years and retired from ASU.

Robert Charles Shapiro, 81, M.D., Ph.D., Psychiatrist and Psychoanalyst, died on January 24, 2006. In addition to many offices he held, he was a founding member of the Arizona State Psychiatric Society. He was an adjunct professor in psychotherapy to the Ph.D. candidates of ASU, and consulted patients for the 12 years that he taught on the ASU campus. A donation may be made in Dr. Shapiro's name to The President's Community Enrichment Program, P.O. Box 2260, Tempe, AZ 85280.

Frederick Allen Staley, 64, died June 14, 2006. Fred came to ASU in 1970 as a professor of Environmental Education at ASU. Fred directed the Faculty of Teacher Education for several years, and was a key member in the design and development of TEAMS, an innovative teacher education program for mathematics and science with a middle-school focus. He retired in 2003. Contributions may be made to the Desert Botanical Garden 1201 N. Galvin Parkway Phoenix, 85008 or to the Heard Museum 2301 N. Central Ave. Phoenix, 85004.

Carlos Vallejo, 63, an associate professor of curriculum and instruction with ASU's College of Education on the Tempe campus, died Feb. 18. Vallejo joined ASU in 1976 as an assistant professor within the College of Education. The Carlos Vallejo Memorial Scholarship Fund has been established with the ASU Foundation. Donations can be sent to: ASU Foundation, P.O. Box 2260, Tempe, AZ 85280-2260.

Dr. J. Bruce Wagner, Jr., 78, passed away April 25, 2006. He taught at several universities before being named a Regents Professor at ASU. Contributions may be made to the Parkinson's Disease Foundation, 360 W. Thomas Rd., Phoenix, AZ 85013 or Hospice of the Valley, 1510 E. Flower St., Phoenix, AZ 85014.

William Ringwalt Warner, 65, died on March 17. He served as principal double bassist with several symphonies including Phoenix Symphony. He taught double bass at numerous universities including ASU.

Dr. Charles Warren, 83, passed away on March 4, 2006. After retiring from NAU in 1985, he moved to Tempe, and in 1986 became a part-time instructor at ASU teaching Music History until May 2004.

Erma Lee Weber, 80, passed away May 30, 2006. She worked for over 20 years at ASU in the Comptrollers office. Lee, a writer, has had some of her stories published in the Arizona Highways magazine.

Tim E. Wheeler, 86, passed away on Friday, April 21, 2006. After retiring from the military, he moved to Arizona in 1955, worked for Mountain Bell Telephone Company for 31 years, primarily at ASU. Donations can be made to your favorite charity, Hospice of the Valley, 1510 E. Flower Street, Phoenix, Arizona 85014 and/or the Humane Society, 1521 W. Dobbins Rd., Phoenix, Arizona 85

New Members

Joseph Askins	Info Tech
Sharon Ayres	Sch of Constr
Enrique Ballon-Aguirre	Lang & Lit
Don E. Cottrell	Educ Comp Eng Tech
James A. Eberle	Nursing
Matthew J. Erschen	Distance Learning
Robert H. Fenske	Ed Leadership
Jeanne Fronske	Art
Diane Hinds	Registrar
Douglas A. Johnson	Accounting
Pauline Komnenich	Nursing
Freddy Larkins	Grounds (Phys Facil)
Darwyn Lindner	Psychology
Jeanette Mahoney	Sponsored Projects
John McIntosh	College of Design
Rose Minetti	Libraries
Timothy O'Leary	Info Systems
Robert Ohmart	ASUE Biol Sci
Donna Portz	Info Tech
Lois L. Schneberger	Libraries
Karen Shannon	Journ/Commun

ASU College Bowl

Members of the Retirees association will be assisting in the launching of an Academic Bowl this fall that will pit four undergraduates from each of 16 ASU schools in an intellectual competition modeled after the old GE College Bowl that was on TV for so many years. The competition will take place on four evenings in October with a final round in early November.

What's in a Name?

(Continued from p. 4)

The American Indian Policy and Leadership Development Center is a collaborative of scholars devoted to Indian affairs. ASU not only is in the right geographical location for the Center but the university also offers one of the strongest academic programs in American Indian studies in the country.

The Center for Metabolic Biology will tackle Syndrome X, also known as insulin-resistance syndrome. Kinesiologists, life scientists, chemists, biochemists and physicians are brought together in this center for the solution to a syndrome that accounts for almost half of all the nation's health care costs.

And, the Center for Social Dynamics and Complexity – a think tank of natural scientists and social scientists – will study social complexity and its underlying theme that "...complex group-level phenomena, such as the behaviors of insects to key aspects of human social organization, can emerge from simple rules governing individual behavior."

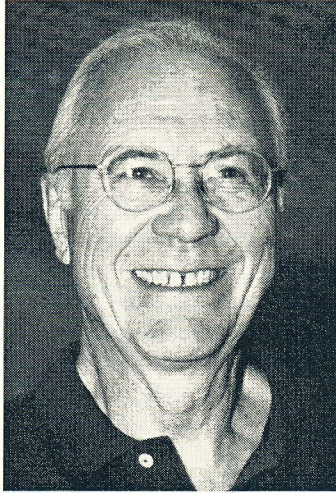
New buildings also are part of the evolution. Two Interdisciplinary Science and Technology Buildings, dedicated in Spring 2006, provide laboratory suites and modules, office space and an interactive, open design to help assure the success of the programs they house.

By Wilma Mathews

President's Message

As we begin a new academic year, I send greetings to all retirees of Arizona State University. The Retirees' Association is primed and ready to serve you, and I encourage everyone to participate in the programs and services offered by our organization. The purpose of ASURA is to assist those who have been affiliated with the University during their professional careers and to offer a meaningful opportunity to associate with some of the best people ever.

Last Spring, we were informed that the Visitors Center Building was to be razed, and that the Retirees would have to be relocated. The Community Services Building (former Children's Hospital) on Curry Road was suggested as the new site, and we toured the building to see what facilities might be available. A summer move was scheduled, then postponed, and then rescheduled. However, in late July, the University announced that the Visitors Center would remain for another year, and plans to move were cancelled.



Alan Matheson

We are grateful to have our "home" and will operate there for the present year. The future, after then, is uncertain, but we have confidence that the University will find a suitable place for us. Free parking for our volunteers and committee members will continue for this year.

Please join us as we provide vital information concerning health insurance and retirement programs; activities such as local travel and educational offerings; as well as service projects assisting students at the University and community members. I can assure you that you will find friendship, support and pleasure as an active member of this fine organization.

I thank our committee members and the loyal crew led by Corinne who staff our office daily. We are all indebted to you.

Alan Matheson, President ASURA 2006-07

Prime Times

Issued three or four times annually by the Arizona State University Retirees Association with special editions as needed. Articles welcome, subject to Board approval. Contact: ASU Prime Times, ASU Retirees Association, PO Box 872512, Tempe, Arizona.

Arizona State University Retirees Association

ASURA has a volunteer-staffed office in the ASU Visitor Information Center, Rural Rd. and Apache Blvd. (northwest corner) in Tempe, Arizona. Office hours are generally Monday through Friday, 9 AM to noon and 1 to 4 PM. Phone: 480-965-7668; Fax: 480-965-7807 ASURA Website: <http://aspin.asu.edu/asura/index.htm>



Prime Times

ASU Retirees Association
PO Box 872512
Tempe, AZ 85287-2512