

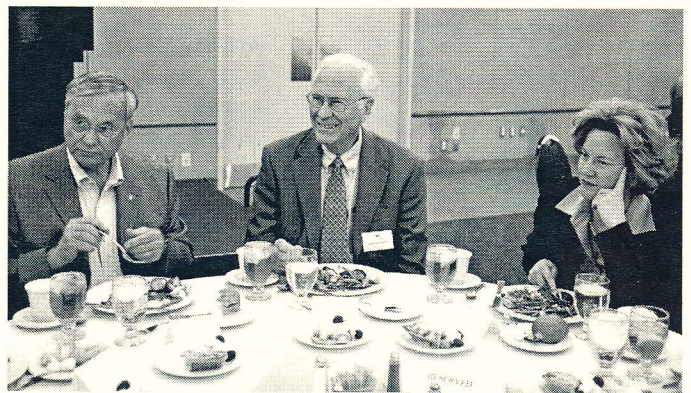


ASURA Past Presidents Luncheon. On February 27, President Alan Matheson hosted a luncheon at the Karsten Golf Clubhouse for our past presidents. From left to right: Elmer Gooding (2005-06), Dave Scheatzle (2004-05), Bob Beeman (1994-95), Don Gieschen (1996-97), Zeke Prust (1999-2000), Denis Kigin (1992-93), Doug Johnson (2007-08), Madelyn Wright (1997-98), Floyd Land (2003-04), Hal White (1998-99), Alan Matheson (2006-07), Mat Betz (2001-02), Bob Ellis (1991-92) founding president. Other Past Presidents not attending: Anne Pittman (1993-94), Diana Regner (1995-96) deceased, Don Dotts (2000-01) and Quentin Bogart (2002-03)

Retirees Day 2007

It was another well attended and well organized morning program. The luncheon speaker was Corporation Commissioner Kris Mayes. She received both her undergraduate degree and law degree from ASU. While at ASU, she was editor of the State Press. Early in her law career she was appointed press secretary for Governor Janet Napolitano and then selected by the Governor to fill a vacancy on the Arizona Corporation Commission.

Retirees Day was begun under the Presidency of Anne Pittman in 1994 at the suggestion of Education Committee Chair Don Gieschen. Combining education and social aspects, "Retirees Day" each year has presented a February platter of tasty tidbits – seminars on a variety of subjects of interest to retirees, socializing, a luncheon, and a principal speaker of statewide note. Event co-chairs were Joe Wilkinson and Sue Blumer.



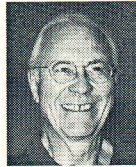
Congressman Harry Mitchell, ASURA President Alan Matheson and Corporation Commissioner Kris Mayes share a luncheon discussion.

ASURA Office, Officers and Committee Chairs**ASURA OFFICE**

Corrine Irvan, Office
Coordinator and Business
Operations Manager
Mci212@imap1.asu.edu
(480) 965-7668
(480) 965-7807 fax

**OFFICERS**

President
Doug Johnson
(480) 545 0719
doug.johnson@asu.edu

**Past President**

Alan Matheson
(480) 967-8500
alan.matheson@asu.edu

**Vice President**

Val Peterson
(480) 659-6668
val.peterson@cox.net

**Secretary**

Maxine LaRoux
(602) 997-5920
laroux@imap3asu.edu

**Treasurer**

George Umberson
(480) 893-8250
george.umberson@asu.edu

COMMITTEE CHAIRS**Activities****Adopt-A-Family**

Joan Leard
(480) 947-6119
jleard@asu.edu

Education

Claudelle L'ecuyer
(480) 491 5976
clauditalk@cox.net

Sue Blumer
(480) 948-6632

Cynthia.blumer@asu.edu

Insurance – ADOA

Dick Murra
(480) 821-0124
murra@cox.net

Insurance – ASRS

Doug Johnson
(480) 965-6614
doug.johnson@asu.edu

Legislative Liaison

Jerome Aronson
(480) 945-9078
jerrya@asu.edu

Website

Bob Beeman
(480) 967-7084
bobbeemansr@juno.com

Membership

Elmer Gooding
(480) 831-2990
Elmer.Gooding@asu.edu

Newsletter

David Scheatzle
(480) 967-9224
scheatzle@asu.edu

Retirement System

Alan Johnson
(480) 966 9617
apjinaz@hotmail.com

Scholarship

Sue Blumer
(480) 948-6632
Cynthia.blumer@asu.edu

University Club Liaison

Zeke Prust
(480) 838 0511
zaprust2@juno.com

Volunteers

Marie Sale'
(480) 556 9305
marie.sale@asu.edu

ASURA Board of Directors and Ex-Officio Members**Terms Expire 4/2010**

Robert Barnhill
480 946 1181
barnhill@asu.edu

Connie McNeil
480 945 3565
mcline@cox.net

Val Peterson
480 659 6668
val.peterson@cox.net

Mary Stevens
602 758 3750
mary.stevens@asu.edu

Lou Weschler
480 968 4955
louis.weschler@cox.net

Terms Expire 4/2009

Mathew Betz
480-488-7954
mandjbetz@aol.com

Ted Carey
480-831-1653
cpcary@juno.com

Bob Francis
480-968-0535

Doug Johnson
480-965 6614
doug.johnson@asu.edu

Terms Expire 4/2008

Charles Backus
480-988-1201
cbackus@asu.edu

Maxine Laroux
480-966-9007
laroux@imap3.asu.edu

Joan Leard
480-947-6119
jleard@asu.edu

George Umberson
480-893-8250
george.umberson@asu.edu

Ex-Officio Members

Susan Mattson
2005-06 Pres., Acad. Sen.
G Hall 116, MC 2202

Rick Martorano, for
Classified Staff Council
480-727-6485

Wilma Mathews,
Public Affairs
(480)727-6031

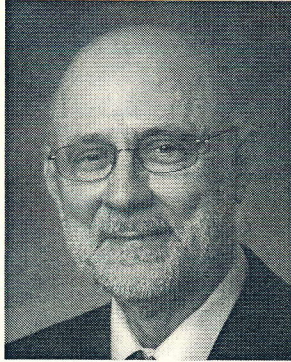
Sheree Barron, for
Human Resources
480-965-7878

Karen Hammann, for
Sr. VP / Provost
480-965-1224
Karen.Hammann@asu.edu

YOUR NEWLY ELECTED BOARD MEMBERS

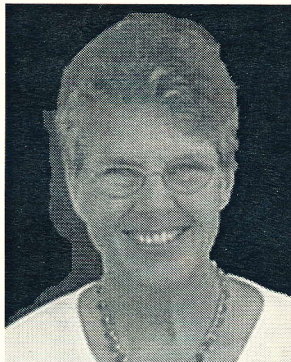
The following are short bios on members who have been elected to three-year terms (2007—2008) on our Board of Directors.

Robert Barnhill. Bob received his Ph.D. from the University of Wisconsin in 1964. At the University of Utah from 1964-1986 he helped create Computer Aided Geometric Design, a science and engineering discipline that integrated the first interactive computer graphics with his applied mathematics background. He came to Arizona State University, as Chair of the Computer Science Department, in 1986. From 1991-1997 Dr. Barnhill was the (second) ASU Vice President for Research. During this time ASU was recognized as a Carnegie Research I institution. He returned to his hometown alma mater, the University of Kansas, as Vice Chancellor for Research from 1997-2003, After a year at the National Science Foundation as the Dean in Residence and two years at the University of Texas as its initial Vice Chancellor for Research, he has returned to his Phoenix home.



His wife, Marigold Linton, was a Professor of Psychology at the University of Utah, where they met. At ASU, she was Director of Educational Services, and then inaugurated the American Indian Programs at ASU East (nee Polytechnic). She is also a member of the ASU Retirees Association.

Connie McNeil. Connie joined ASU in Computing Services in 1976 after working at Stanford University (her alma mater) for 10 years. Her husband Barry joined the Mechanical Engineering faculty at ASU at the same time. After working for almost 15 years in technology leadership positions on the Tempe campus, Connie moved to the West campus as the founding head of the Information



Technology group there. She retired from ASU in May 2005, and is currently volunteering at the Society of St. Vincent de Paul. Connie and her husband enjoy an active family life and are baseball fans, bird watchers and hikers.

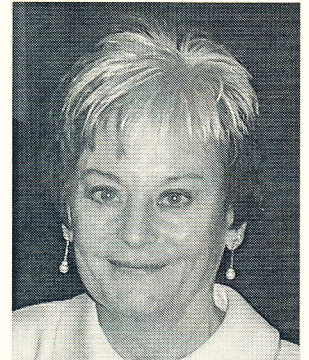
A little old man shuffled slowly into an ice cream parlor and pulled himself slowly, painfully, up onto a stool. After catching his breath, he ordered a banana split.

The waitress asked kindly, "Crushed nuts?"
"No," he replied, "Arthritis."

Val Peterson. Val retired in 2000 as Director of Facilities Management at ASU after serving in the position for over 12 years. He served in a similar position for 20 years at Utah State University prior to coming to ASU. Peterson has been a member of regional, national and international facilities management associations since 1970, and has served as President of each organization. In addition, he has written regular feature columns in an international facilities management magazine and regional newsletters. A compilation of selected articles was published in a book titled *Communication is the Key*. Peterson is a licensed professional engineer and spent a portion of his career working as a consulting engineer.



Mary Stevens. Mary was the Senior University Counsel for Employment Relations at ASU before she retired in January 2007. She was employed in the General Counsel's office for 22 years. Her specialization was employment law and at ASU, her focus was on faculty and academic employment, personnel, and civil rights matters. Prior to joining ASU, she was an associate attorney with the law firm of James A. Ullman, P.C. that specialized in teacher employment. She was an elementary school teacher in Phoenix for 10 years before attending law school. In 1980, she served as a law clerk to the Honorable Justice James Duke Cameron on the Arizona Supreme Court. Mary received a B.A. from ASU, an M.A. in Theater, University of Denver and a J.D. from ASU. Mary's loves are theater, dancing, golf, skiing, travel and volunteerism in the area of adult or children's literacy. She is really looking forward to serving on the Board of ASURA.

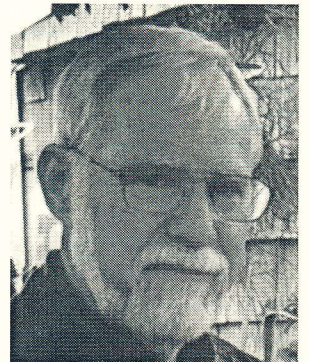


Lou Weschler.

Professor Emeritus
School of Public Affairs

Member of ASURA since 2000
Served on ASURA Education Committee 2000-2006 Liaison with Emeritus College for ASURA Board 2005-2007

Currently: Artist in painting, photographs and prints. Also Docent, ASU Art Museum.



Calendar of Events

ASURA Veterans Day Golf Benefit Monday, Nov. 12
Homecoming Block Party Saturday, Oct. 27

Be a volunteer for ASURA

At the Annual Meeting, we cut the birthday cake. The ASU Retirees Association has now succeeded for 16 years because of strong leadership and willing volunteers. Many of the original members are beginning to step back to let the "younger" members have a chance to re-invent the organization. So, there is an opportunity for you and your friends to become involved in an area in which you are interested. By taking a look at page 2, you will see a directory of current positions, and more can be added. We need to emphasize efficient communication by email and website with our over 900 members, so being computer savvy would be an asset. Recent attritions have created a need for office volunteers – one half day per week. Our new office at the Community Service Building (CSB), north of the river on Curry Road, is well furnished, has three newer computers, lots of natural light, a great view and convenient free parking.



Martha Waltemath, Annual Meeting coordinator, cuts 16th annual ASURA birthday cake with Alan Matheson looking on.

You may have noticed that we have put an activities questionnaire in with your membership renewal. This information is put into a data base and gives our administrators an overview of who is interested in what. Popular topics could be the subject of sub-groups who could organize themselves and conduct periodic programs. Photography, golf, quilting, water colors, ASU history, digital editing, travel, luncheon programs to mention just a few. Campus facilities (even in the CSB) may be available for some of these activities. These activities give us an opportunity for continuing education and to socialize with former colleagues. You don't have to be the main leader of an activity, but just be on the committee, or a co-chair. If you haven't yet sent in your "Activities Questionnaire," please consider doing so. Or, you can send an email to our President, Doug Johnson, at doug.johnson@asu.edu or any of the Board members you know listed on page 2.

Remembering Gale Richards

Gale Richards died in June, as you will find in our obituaries on page 11. Because of his considerable contributions and dedication to our organization, he is also honored here. He was Secretary of ASURA's founding Board in 1991, and was very instrumental in the development of our By-Laws. And, for many years he represented us both at the Arizona State Retirement System and as a member of the Legislative Liaison Council. Past-ASURA President Quentin Bogart's reminiscing: "Gale was a memorable person... a great professor and his contributions to our "Young University" were important and many. He and I represented ASURA at Legislative meetings. Gale was always alert to what was going on and he didn't shy away from asking key questions and making helpful suggestions. He invariably had something of interest to say." Past-ASU President Hal White said, "After he retired from ASU, Gale wanted his expertise to be of value. He was certainly the most professional of professionals who served the Retirees Association. I have known no one who was as aware of, and interested in, colleagues and students who have passed his way - from where they came and where they were headed." The large attendance at his memorial service by family, friends, colleagues and former students was a tribute to his life – well lived.



ASU Veterans' Day Golf – Nov. 12

The fourth annual ASU Veterans' Day Golf Benefit will be held on Monday, November 12th at the ASU Karsten Golf Course. Last year 136 players participated in an event that raised money for ASURA's Video History Project. Notable personalities from ASU, current and the past, participate. We have had a full field of players for the past two years.



2006 players: Terry Coyle (son of Mary Coyle), Bob Davies (Former President of the Sun Angel Foundation) and Bobby Winkles (ASU's Collegate Baseball Hall of Fame Coach).

Dr. Swetman's Bitter Medicine

The new president, young and overflowing with energy, descended on the Tempe campus like a cyclone, uprooting long-established procedures and wreaking havoc on veteran faculty and administrators alike. His aim was to remake the institution in his own image and to send its academic reputation soaring to previously unimagined heights.

Arizona had never seen his like before. Within a few months he had taken giant steps toward the achieving of those goals, although in the process he left many a loyal and beloved professor in shock, unemployed, and burning with resentment. But, like a dose of bitter medicine, he cured many of the institution's ills and started it on the path to better academic health.

His name was Dr. Ralph Swetman, a man who held a master's degree from Columbia University and a doctorate from Stanford.

In 1930 Dr. Swetman came to Arizona State Teachers College from the presidency of Mendocino State Teachers College in northern California. He succeeded Arthur J. Matthews, who had retired after thirty years as president of ASTC Tempe. The two men could hardly have been more different in personality and management style. Matthews was everybody's friend -- a big, jovial hulk of a man who had never bothered to earn a doctoral degree. So lightly did he value advanced study that he hired more than a few professors who had no graduate degrees at all. Under his benign leadership, the president's door was always open and this happy college, only recently advanced from normal school status, was a joy to serve.

Swetman was, in the view of biographer Ernest Hopkins, "a man of surgical personality." He was all business and cared little about personal relationships. With him at the helm, ASTC would make rapid strides toward academic excellence and meet the increasingly lofty accreditation demands of the powerful North Central Association of Colleges and Secondary Schools.

But these gains were not without human suffering. Within two months after his arrival, six of Matthews' faculty were gone. By the spring of 1933, 31 of the 56 members of the old faculty had been axed -- and this at the depth of the Great Depression, when teaching openings were almost non-existent. One of the victims died of a heart attack on hearing he was fired, and another committed suicide. Those who remained were in constant fear that they would join the army of unemployed.

Nina Murphy, who later gained national recognition for her leadership in promoting women's sports, was one of Swetman's early victims. "I had a bachelor's degree when I first came to the campus," she told an interviewer, "but that was all. Dr. Swetman called me to his office -- an ominous sign -- and told me I must earn a master's degree if I hoped to remain on the faculty. So I begged or borrowed enough money to go to the University of Southern California for a



year to get my master's. But when I returned, Dr. Swetman refused to hire me back. 'No money in the budget,' he said. So there I was with no job and loans to pay back. Luckily, I was able to get an entry level job in the Phoenix Union High School District and taught physical ed there for a couple of years before a position opened at ASTC."

Not everybody reacted negatively to Dr. Swetman's heavy-handed methods, however. Most of the 700-plus students cheered his creation of a student government structure, with a constitution and elected officers to implement it. They were equally pleased with the new journalism department and with the revamping of the student newspaper, the *State Press*. Alumni, students and townspeople were delighted with the hiring of coach Ted Shipkey, a former Stanford football star, whose Bulldog eleven beat the University of Arizona Wildcats in 1931. It was the first Tempe victory over the Cats since 1899.

More important was the new president's overhauling of the academic structure of the college, dismantling some areas of study and creating new ones. There was little give and take between president and faculty, with written procedures handed down from the top and rigid discipline governing teaching methods. The happy Matthews days were a thing of the past, and those teachers who did not toe the line did not stay for long.

Painful as it must have been for all concerned, Dr. Swetman's methods produced results. Even his most severe critics were forced to admit that faculty professionalism was being rapidly advanced and ASTC's academic reputation began to grow. Just as important, the new changes impressed the North Central Association, which granted the college its coveted accreditation.

When a new governing board for the college took office in early 1933, however, its members had heard enough horror stories from faculty and townspeople to call for a change. President Swetman was notified that his contract would not be renewed, leaving the presidency open for a man the old board had considered as Matthews' successor.

Grady Gammage, president of ASTC at Flagstaff, was their choice. He would remain in that position for nearly 27 years, until his sudden death in December, 1959.

By Dean Smith

Prime Times

Issued three or four times annually by the Arizona State University Retirees Association with special editions as needed. Articles welcome, subject to Board approval. Contact: ASU Prime Times, ASU Retirees Association, PO Box 873308, Tempe, Arizona.

Arizona State University Retirees Association

ASURA has a volunteer-staffed office in the Community Service Building, 200 E. Curry Rd., Room 201B in Tempe, Arizona. Office hours are generally Monday through Friday, 9 AM to noon and 1 to 4 PM. Phone: 480-965-7668; Fax: 480-965-7807. It is best to call before you stop by the office to insure that it will be open and staffed. ASURA Website: <http://aspin.asu.edu/asura/index.htm>

HEALTH INSURANCE

MANAGING YOUR HEALTH CARE COST

There's not much you can do about the premium charged for the health care program that you elected during the last open enrollment. The ability to change the monthly cost for your program will have to wait until the next open enrollment when you will have the opportunity to select another program that may have a lower premium. In the meantime you may be able to save a little of the cost of prescription co-pays. It all depends upon the effort that you are willing to devote to the tasks involved. First know what your co-pay requirement is. Suggestions follow.

First make a list of the prescriptions that you take on a regular basis.

Divide the list into Generic and Brand name drugs. The co-pay for each prescription will tell you which list a given prescription should go into. Make two tables with four column headings:

GENERIC DRUG • CO-PAY • ALTERNATE SOURCE • COST

BRAND NAME DRUG • CO-PAY • GENERIC AVAILABLE • CO-PAY

You will need additional rows on which to record all of your drugs.

In order to complete your cost analysis for your generic drugs you will have to know whether your Pharmacy will always charge you the co-pay price or will they charge you the actual cost if that cost is less than the prescription co-pay amount. For instance, WalMart and Target have stated a pricing policy of charging \$ 4.00 for generic drugs. If your Pharmacy charges you the co-pay amount it would pay you to get your generic drugs from WalMart or Target as a direct purchase, not against your health plan contract.

You should also investigate whether they would fill a prescription for 100 tablets rather than 90 tablets at a cost that would be less than the mail order cost. Your doctor would have to write a new prescription for the increased quantity. Fry's and Costco have also been known to quote lower cost than the co-pay called for under your contract.

For Brand name drugs your greatest savings will be by changing to a generic.

Ask you doctor about the use of generic rather than brand name products.

Remember all generic drugs were once a brand name drug and they will often be more than adequate to meet your needs unless you have special conditions that must be addressed. If all else fails maximize the use of the "mail order" option provided in your contract.

Periodically go over the list of drugs that you are taking with your doctor.

Ask if it is possible to stop taking any on the list. As your health situation improves it may be that a drug on the list is no longer required or the prescribed dosage may be changed.

Use your chart to record your findings. Remember, you do not have to buy your prescriptions under your health Insurance contract. If you can buy your prescriptions at a lower cost direct from an alternate source, Go for it!

FIRST STEP FOR NEXT OPEN ENROLLMENT

Retirees should understand the system and procedures that provides retirement benefits. Each retiree should become familiar with not only the benefit programs in which enrolled but also to know which state agency contracts for the health and dental insurance programs in which they are enrolled.

Having health and dental insurance programs offered by two separate state organizations may be confusing. All the more reason to identify which of the two state agencies furnishes the programs in which enrolled in order to correctly respond to the open enrollment requirements of their responsible agency. Even though you may receive a retirement check from ASRS that does not mean that ASRS is the state agency responsible for furnishing your health and dental insurance programs. Further, even though Arizona State University provided for your benefits while actively employed, the State of Arizona Department of Administration (ADOA) was the responsible agency.

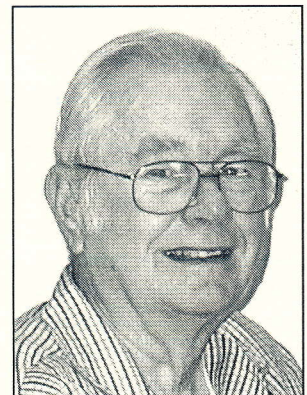
When a state employee retires additional avenues are offered and new restrictions are imposed.

The retiring employee has the right to retain his/her health and dental insurance in the ADOA program in which they were enrolled as an active employee. They may also elect to transfer their enrollment to the health and dental programs offered through the Arizona State Retirement System (ASRS).

If the retiree elects to transfer coverage to ASRS they will not be allowed to return to the ADOA health and dental programs.

Get ready now to respond to the next open enrollment. Find out which agency contracts for your Health and Dental programs. ADOA or ASRS. This is especially important for those retirees who have their program through PacifiCare (now United Health Care) since both ADOA and ASRS offer health insurance programs through the PacifiCare name.

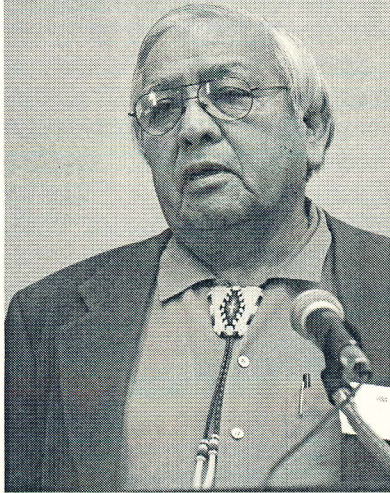
**Richard J. Murra,
Chair, ASURA Health
Insurance Committee
480-821-0124**



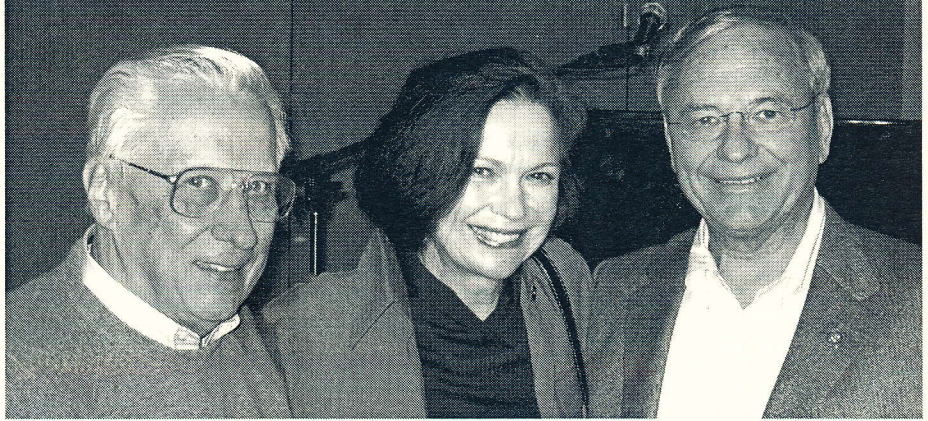
Ed. Note: Dick Murra has been our Chair of the Health Insurance Committee since 1993, when he retired as director of Human Resources at ASU. Before that, he retired from an Air Force career (1974), that started in WWII flying B-25s, as Colonel with 33 years active duty.

Photos of ASURA Activities

Peterson Zah -on history of Native Americans in Arizona

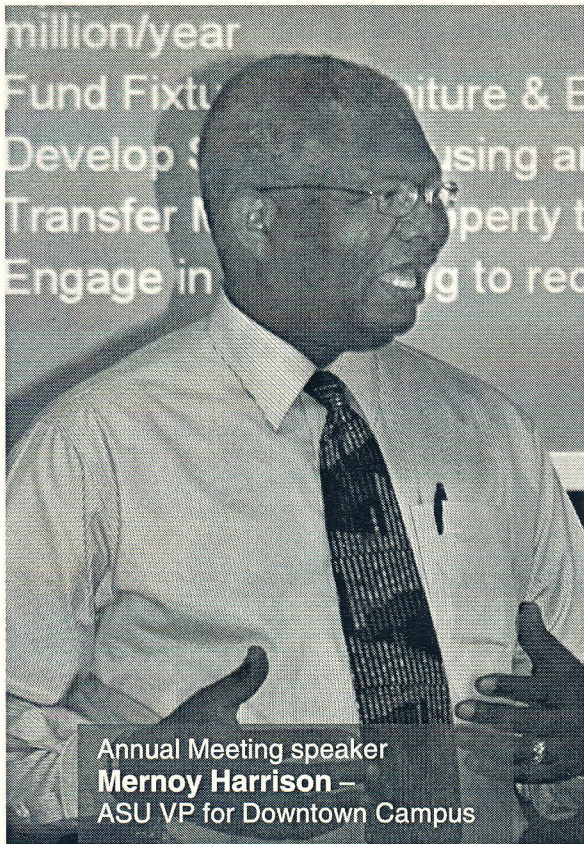


Mat and Judith Betz with Congressman Harry Mitchell,

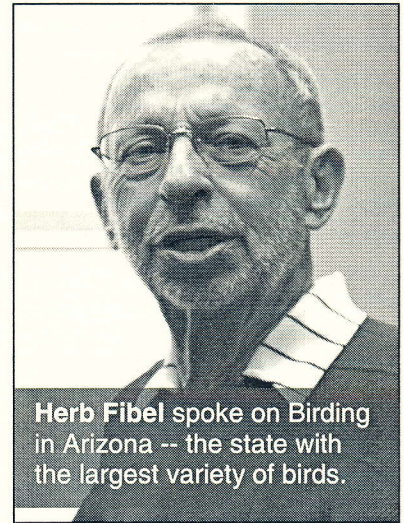


Retirees Day

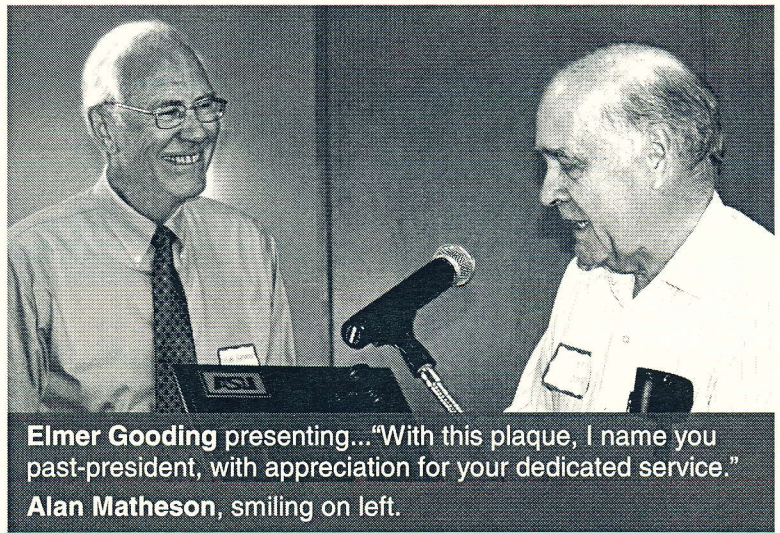
Annual Meeting



Annual Meeting speaker **Mernoy Harrison** – ASU VP for Downtown Campus



Herb Fibel spoke on Birding in Arizona -- the state with the largest variety of birds.



Elmer Gooding presenting...“With this plaque, I name you past-president, with appreciation for your dedicated service.” Alan Matheson, smiling on left.

More on – “move to the “Sanitarium”

As the former State Tuberculosis Control Officer, and later Director of the Arizona Department of Health Services, I enjoyed Ann Patterson's article on the history of the “Sanitarium” where the ASURA office is now located. However, I must clarify two paragraphs in the article. In 1963, when a new building was erected on the site of the old tuberculosis sanitarium, the new building was also built as a TB sanitarium. For the next 10 years a declining number of TB patients were housed in the facility. On one floor was a locked and guarded unit, where inmates from the Arizona State Prison in Florence were treated for tuberculosis.

By 1970 only 40 tuberculosis patients were hospitalized in the facility. With new drugs available to treat this disease, we concluded that all patients with tuberculosis could be managed in community hospitals and clinics. Patients were gradually discharged and staff were transferred to other functions. A major decision, however, was what to do with this fairly new, empty building on Curry Road. Proposals included using it as a mental health clinic or a correctional facility. The state's Crippled Children's Services were housed in an old structure in downtown Phoenix, so finally those services were moved to the first and second floors of the renovated sanitarium in 1973. Medically at-risk, mentally retarded children, from the state's program for the developmentally disabled, were moved to the third floor of the building.

The remainder of Ann's account is correct. When the Crippled Children's program was shifted to private hospitals in the 1980s, the building was transferred to ASU.

By Suzanne Dandoy

Living History Video Project

June Payne has stepped down from the Living History Project Committee which she chaired since its inception in 2002 and has assisted in transitioning the new chair, Bob Francis. The project committee met twice to select new “interviewees.” The committee members are: Bob Francis, Chair; Mat Betz; Marvin Fisher; Alan Matheson; Edward Nelsen; June Payne; Zeke Prust; David Scheatzle; Hal White and Ruth Wineberg.

In addition to the 33 interviews completed under June's leadership, nine more were completed this last year, giving the ASURA ownership of 42 completed interviews. Each recording also exists in an audio and transcribed format.

Living History interviews completed during the past year include: Mathew Betz (Provost and Engineering); Ellamae Branstetter (Nursing); Hal Fearon (Business); Marvin Fisher (Liberal Arts and Sciences); Elmer Gooding (Provost and Business); Dick Murra (Director of Human Resources); Gale Richards (Public Programs); and Bobby Winkles (Baseball).

The Board of Directors gave its approval for all interview to also be transferred to a DVD format with five copies (one to be given to each interviewee, one to the Library Archives, one to the ASURA Office for display or check-out, and two back-up office copies). Production of these DVDs is in progress.

Discussion is currently being held between the Video Project and the Archives Division of the ASU Libraries regarding the Archives serving as the depository and research source for all Project interviews, past and future. A contract with Agave Productions (Pam Stevenson) has been signed for 2007 allowing them to continue to assist with the production of interviews and production of any requested DVDs.

By Bob Francis



The Tri-University Retirees Coalition Meeting was held on February 28th at our new quarters in the Community Services Building. UA Retirees were the financial host this year. Participants included delegates from the retiree organizations at Arizona's three universities: five from ASU, three from NAU, and five from UofA. Standing from left to right: Charlie Chittenden (Actuary: Buck Consultants), Jerry Aronson (ASURA Legislative Liaison), Uwe Fink (UARA), Pat Klein (ASRS Asst. Director, External Affairs), Dan Julien (NAURA Legislative Liaison), Alan Johnson (ASURA Lobbyist), Phil Rulon (NAURA, ADOA Liaison), Ben Zinnecker (NAURA president), Alan Matheson (ASURA president), Keith Meredith (UARA, ASRS Board chair); Seated left to right: Susanne Dobel (ASRS Special Assistant to Pat Klein), Leslie Sorenson (ASRS Government Affairs), Doug Johnson (ASURA president elect), Jim Burke (UARA), Janice Murphy (UARA president). Matters related to the upcoming legislative session were discussed. A considerable amount of time was devoted to the subject of health insurance. ASURA incoming President, Doug Johnson briefed delegates on ASU's studies of pre-paid health insurance.. While this approach, in the exploratory stages, may benefit future retirees, no relief is in sight for present retirees

Obits

Volunteers, including Becky Reiss and Patty Kelley, regularly read obituary notices in the two local newspapers looking for items about retirees, their spouses, current ASU employees and ASU affiliates. Some may be missed because ASU is not mentioned in the article. Please call or write to us if you know of someone whose death should be reported in Prime Times. We would like to have name, age, city of residence, date of death, and ASU department and title. Notices in this issue include all of those received since the last issue, through June 30, 2007. Check local newspapers for complete obituaries.

Micheal Boulden, chief of staff for ASU Foundation for the past two years, passed away February 18. He earned bachelor's and master's degrees from Iowa State University. He was the first student to hold the minority student assistantship position with both the ISU Foundation and ISU Alumni Association. At ASU his dedication to higher education and fundraising was evident in his commitment to ASU and the foundation. Boulden is survived by a daughter, his former wife, his mother, sister and brother.

Dora Burton, 85, passed away on March 4. She was born in Leningrad, Russia and earned her MD in Russia and later her PhD at the University of Washington. She taught Slavic language & literature at ASU for 27 years. Survivors include one daughter, two grandchildren and a sister. Contributions in Dora's memory may be made to Hadassah Medical Center, Kiryat Hadassah, POB 12000, Jerusalem, Israel 91120.

Sophie Helen Claxton, 83, passed away in June. She is a former employee of Arizona State University's Medical Center and is survived by two sons, two grandsons and two great-grandchildren. Donations can be made to Hospice Family Care Foundation, 1550 S. Alma School Rd, Ste. 102, Mesa, AZ 85210.

Douglas Cornell, 65, former assistant dean for business operations in the College of Liberal Arts and Sciences, passed away May 10. Cornell retired from ASU July, 2005. He is survived by his wife, Ann; three sons, his mother, his brother and six grandchildren.

Verla H. Corno, 85, wife of Gene (Edward E.) Corno, professor of art (ret.) of Tempe, AZ, died on April 19. While working as an office manager at the Publicity Office at ASU, Verla met and later married student photographer, Gene Corno. Verla is survived by her husband, three children, three grandchildren and five siblings. Donations in Verla's memory can be sent to the Alzheimer's Association or the Hospice of the Valley.

Richard Charles Dahl, 85, professor emeritus of the Sandra Day O'Connor College of Law at ASU and its founding librarian, died April 16. He majored in philosophy at University of California (Berkeley), then attended the Harvard Graduate School of Business Administration for one semester before enlisting and serving in France during WWII. After the war, while on a bicycle tour of England, he met his first wife, Grace, and her three-year-old son, Barry. Together, the couple had a son, Kevin. Richard earned his Bachelor of Library Science from UC Berkeley School of Librarianship (1951), and a J.D. from Catholic University (1958). He served as the law librarian for the University of California, the University of Nebraska, the Office of the Judge Advocate General for the Navy, and Washington state. He also was Civil Division

Librarian for the Department of Justice and the U.S. Treasury Department's librarian. In 1966, Richard was recruited by Willard Pedrick, dean of the ASU College of Law, and was one of the school's founding faculty. He amassed the 60,000 volumes needed for accreditation and also taught legal research, ethics and government. After retiring, Richard earned a master's degree in history at ASU. Richard's wife, Grace, died in 1976. After a brief second marriage, Richard married Jeannine Dunwell, a psychiatric nursing professor at ASU. Richard is survived by his wife, Jeannine, two sons, two step-daughters, seven grandchildren and one great-granddaughter. The family suggests donations to the College of Law.

Dieterich, John H. (Jack) b. 1929 - d. 2007. A native of Missouri, Jack was a Project leader for the USDA Forest Service, Rocky Mountain Station, located on the Arizona State University Campus. He was instrumental in getting fire effect research implemented in the Southwest.

Richard Lee Ditsworth, 82, and Professor Emeritus of Engineering at Arizona State University, passed away on March 8. He is survived by three sons, one daughter and eight grandchildren. He completed a doctorate in Mechanical Engineering at Michigan State University and then began teaching at ASU in 1959, retiring in 1991. A tribute donation may be made to St. Mary's Food Bank.

James W. Elmore, 89, passed away on April 19. He received his B.A. from the University of Nebraska. and a Masters degree in Architecture from Columbia University, after service in WWII and work in New York City, he moved to Phoenix in 1948, where he began to practice architecture and teach at Arizona State College at Tempe. For the next 25 years, Professor Elmore was instrumental in the development of the College of Architecture at ASU, becoming its founding Dean. He also served as a Director on many local boards, including the Heard Museum, the Valley Forward Association, the Central Arizona Historical Society, and the Central Arizona chapter of the American Institute of Architects. A source of great pride for him was seeing the realization of the Rio Salado project, a concept arising from design proposals in the College of Architecture. Town Lake in Tempe is an embodiment of this dream for reclaiming the channel of the Salt River in the Valley. In recent years he sought solutions for transportation and other issues affecting sustainable growth in the Valley. He was a steadfast advocate for solar energy applications. Dean Elmore was predeceased in 2006 by his wife of 59 years, Ann D. Elmore. He is survived by one daughter, one son and two grandchildren. ASURA has recorded a video history of Professor Elmore's career.

Gregory W. Fitch died on January 27. He was a Professor of Philosophy at ASU from 1974 to 2007. Donations may be made to ASU Friends of Philosophy through the ASU

Gordon Geisler M.D., 88, died March 15. He earned his Pharmacy degree then graduated from the University of Manitoba Medical School in 1948, moving to Arizona in 1955 where he set up his medical practice. In semi-retirement, he was ASU's student health physician for five years. His wife, Bernice, predeceased him in death. He is survived by one daughter, two sons, grandchildren and a great-grandchild.

LaVaun Bernadine Habegger 84, died on February 4. She was preceded in death by her husband, Arthur, two brothers and one sister. LaVaun retired after 23 years with ASU, where she worked as a secretary in the Psychology Department. LaVaun is survived by two children, five grandchildren and seven great-grandchildren. Donations can be made to UMOM New Day, 3320 E. Van Buren St. Phoenix, AZ 85008.

Peter Vincent Hegarty, 79, passed away on March 5, 2007. Pete was an insurance agent for 57 years—34 years in Tempe. Pete is survived by his wife Noretta, a member of ASURA.

Mark Harris, 84, author of the acclaimed baseball novel "Bang the Drum Slowly," which he adapted for the 1973 movie starring Michael Moriarty and Robert DeNiro, died May 30. Harris also wrote a dozen other novels and five non-fiction books. He earned a bachelor's and a master's degree in English from the University of Denver, and a doctoral degree from the University of Minnesota. He was a professor of English at ASU from 1980 to 2001. Survived by his wife, Josephine, one daughter and two sons.

James W. Heywood, 96, died December 20, 2006. In 1958 he retired from the Navy and moved his family to Tempe to attend ASU. In 1960, while still progressing toward his undergraduate degree in Electrical Engineering, Jim joined the staff of ASU's College of Engineering. Later, after completing a Masters degree in Engineering, he accepted a non-teaching faculty position in the College of Engineering. Jim retired from ASU after 23 years of service. Jim is preceded in death by his first wife, Mary. He is survived by four children, nine grandchildren, eight great-grandchildren, and his second wife, Adelaide. Donations suggested to the First Baptist Church Building Fund, 4525 So. McClintock Road, Tempe..

Harry Holmes, 82, passed away December 30, 2006. He worked in ASU's Carpenter Shop for 30 years, retiring in 1983. He is survived by his wife, Madge.

Nels N. Jensen, Sr., 92, passed away April 18. He owned the Varsity Inn, a student hangout adjacent to the ASU campus from 1950-1958. The "VI" was a favorite gathering place for veterans attending ASU. After operating an office supply business in Casa Grande, he returned to Tempe in 1960 to become a purchasing agent at ASU. He remained in that position until he retired in 1980. Nels was preceded in death by his wife, Josephine.. Survived by a daughter and a son, six grandchildren and three great-grandchildren.

Fredrick (Rick) E. Johnson, 66, passed away on January 24. He worked in the aerospace industry for over 30 years, first at AirResearch (Garrett/Allied Signal) and then Tierney Turbine. He was later employed at ASU in the Development Office and retired in January 2006. He is survived by his wife; one son, one daughter, and four grandchildren. Donations may be made to Hospice of the Valley.

Dr. Milton A. Kiesow, 86, died on February 23. He graduated from the University of Wisconsin with graduate work at the University of Nebraska. He was a professor of Education at ASU from 1957 to 1984. He is survived by his wife, Hilda, a daughter, three grandchildren, and one great-grandchild.

Donna Landers, 56, passed away on April 20. At ASU for 25 years, she was a senior lecturer. Survived by her husband Daniel; one daughter and one son, her mother, two siblings and other relatives.

Winifred Emily Thacker Long, 86, passed away on March 26. Winifred was employed in the Planning and Development at ASU. Survived by her husband Ernie, two daughters, one son and four grandchildren.

Kenneth G. Medearis died February 15. Survived by wife, Mary; two sons, one daughter and nine grandchildren. Kenneth earned his Bachelor's and Master's degrees in Civil engineering and Structural Engineering at the University of Illinois.. Later he earned his Ph.D. in Structural Engineering from Stanford University specializing in Structural dynamics and vibrations. He was employed for a short time at ASU.. He later worked on the NASA Space Program at United Technology and provided consulting in the San Francisco Area, and later established his own consulting engineering firm, 'Kenneth Medearis Associates.'

Andrew Robert Mills, 81, passed away December 16, 2006. Andy worked at ASU for 38 years as Garage and Motor Pool supervisor. George Morrell was his very good friend and boss. Andy is survived by his wife, Geneva, two daughters, five grandchildren and seven great-grandchildren.

Rita K. Nenaber, 86, of Chandler, AZ, died on June 27. Rita was born April 11, 1921 in Cavour, SD. She was raised and educated in the local area and in 1948 married Donald Nenaber. They made their home in South Dakota before moving to the Phoenix area in 1965. She retired from Arizona State University..

Dr. William G. Payne, 92, died on May 30. Educated at Baylor Medical School, Dr. Payne opened a private medical practice in Tempe in 1947. He retired in 1988. Dr. Payne served as president of Arizona Blue Shield from 1958 to 1974. A long-time member of the Arizona Medical Association. In addition to practicing medicine, Dr. Payne was known for his support of public education. He served on the Tempe Elementary School Board, was on the Board of Directors of the Arizona School Boards Association and was president in 1968. He also served as president of the Arizona State Board of Regents. In 2000, Dr. Payne received the Hall of Fame Award from the ASU College of Education. He was a past president of the ASU Alumni Association, and the Tempe Rotary Club. Survived by his wife, Adalynlee Valerie. He leaves two sons and three daughters. Condolences to 631 Emerald Hills Dr., Billings, MT 59101.

Alex P. Perez died April 19. Survived by two sons, two brothers, a sister and two nephews. While growing up in Tempe, Alex worked at the ASU kitchen. He retired with 30 years at Cudahay Meat Packing Company. During WWII he served at Pearl Harbor as a medic and was honorably discharged in 1946.

Merle Packer, 85, died April 30. She served in the Women's Marine Corp, taught school at all levels for 35½ years, earned a Doctor in Education Degree in Colorado, and was a life NEA Member. Packer joined ASU faculty in 1959. Among her many contributions to ASU, she was the men's and women's badminton coach from 1967 to 1984. She retired as a professor emeritus of physical education and kinesiology.

Gale Lee Richards, 88, of Tempe, passed away on June 28. He was born in Long Run, West Virginia and raised in Akron, Ohio. He was active in speech, theatre and debate during high school and at the University of Akron, where he taught after graduating with a BA. Completion of an M.A. and Ph.D. from University of Iowa were delayed by a WWII tour as an officer in the Navy. After teaching at the University of Washington and University of Southern California, he joined ASU in 1965 as professor and chairman of the Speech and Drama Department. He chaired the department until 1973 and retired in 1987. For many years Gale was Parliamentarian for the Faculty Senate. He is survived by his wife of 65 years Barbara Lee (Neely) and their three children Robin Lee, Wendell Scott, and Jeffrey Marshall. Donations to Hospice of the Valley..

Dr. Robert B. Rutherford, Jr., 64, passed away on May 4. He was a distinguished professor at Arizona State University. Rob is survived by his wife, Patricia; three sons, 9 grandchildren, two brothers and 7 nephews and nieces.

Rosemarie Card Sandling passed away March 23. She graduated from Washington University Barnes Hospital Nursing program in 1949. Mrs. Sandling's nursing career spanned nearly 55 years and included Director of Nurses at Scottsdale Baptist Hospital, Professor of Nursing at Arizona State University, and Director of Emergency Services at St. Luke's Hospital. She was preceded in death by her husband, Edward.. She is survived by a sister, two nieces, and two nephews. Memorial contributions can be made to the Arizona Humane Society.

Martha Scheier, 82, passed away on December 7, 2006. She was a secretary in ASU's Physical Plant for more than 30 years. She is survived by her husband, Paul and other relatives.

Donald L. Snider, 75, passed away on March 5. Dr. Snider was a professor of electrical engineering at Arizona State University and Cal State-Fullerton; worked as an engineer for Hughes Aircraft, McDonnell-Douglas, RCA, Bell Labs, and NASA. Survived by a brother, sister, four children, and six grandchildren.

Ignacio C. Soto, 96. He worked as a painter at ASU in the late 60's/early 70's. He was preceded in death by his wife, Carmen, two sons and a daughter-in-law. He is survived by a daughter, seven grandchildren, thirteen great-grandchildren, and two great-great grandchildren.

Dorothea Anne "Dottie" Stimbart, 71, died January 17. She worked as a secretary at Arizona State University. Dottie is survived by her husband, Richard; two daughters, two sons, one brother, ten grandchildren and 15 great-grandchildren.

Nancy Fees Thornhill, 66, passed away on April 9. She became a teacher after graduating from ASU in 1963 and taught school at both Gilliland and McKemy Junior High Schools in Tempe. She also later taught a college adjustment course at ASU. She married Sam Fees in 1964. He was the

father of four children, Samuel, Patricia, David and Brian. They added John to the family in 1967, Nancy's only child from "scratch" as she liked to say. Nancy married Gordon Thornhill in 1980. She was preceded in death by her husband, her parents and two stepsons. She is survived by five children, 17 grandchildren. Donations may be given in Nancy's name to RTA Hospice, 1789 W. Commerce Dr., Lakeside, AZ, 85929.

Donald Vance, 83, died on April 1. Don received his degree in journalism from UofA in 1951, then worked for several newspapers. He later earned a masters degree from UCLA and a doctorate in mass communications from Syracuse University. He was a faculty member at Syracuse University, the University of Texas at Austin, Arizona State University and the University of Miami. Don retired from UM in 1991 and returned to Arizona where he became an active AARP volunteer serving as Legislative Consultant in AARP's advocacy efforts. Survived by his wife, Sarah Hudelson, a son and two sisters. Contributions to the National World War II Museum, 945 Magazine St., New Orleans, LA, 70130.

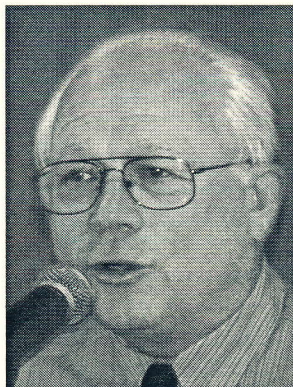
Dr. Norris D. Vestre, 79, passed away April 6th. After military service, he received his PhD in Psychology in 1959 from the University of Minnesota and became a university professor. Norris taught at Minnesota State University, Indiana State University, Washington State University and ASU. At ASU, he became the Clinical Director of Psychology. Over the span of his career, his research was published in hundreds of journals. Norris is survived by his daughter, his ex-wife, a sister, brother. Memorial contributions may be sent to Odyssey Hospice, 202 E. Earll Drive, Ste. 160, Phoenix, AZ 85012 or Alzheimer's Association Desert Southwest Chapter, 1028 E. McDowell Road, Phoenix, AZ 85006.

New Members

Robert Barnhill	Computer Science
Shirley Bell	Nursing
Dixie Blowers	IT
Marilyn Bubb	Human Evolution
Lawrence Costanzo	Materials Handling, ASUW
Catherine Covert	Fine Arts
Dennis Ederer	Student Initiatives
Judith Hagen	University Technology
Bea Harriman	Nursing
Rebecca Houston	Materials
Margaret Manchester	Nursing
William Moor	Industrial Engineering
Wilma Peters	Telephone Services
Gerald Snyder	Financial Services
William Stasi	Facility Management
Erlinda Torres	ASU Downtown
Darla Whitfield	Registrar
Bonnie Wilcox	Registrar
Marcus Wright	Ed. Opportunities Ctr

President's Message

Summer is here. Summer is obvious from the calendar and confirmed by our thermometer. Many ASURA members are away traveling to cooler climates or dreaming about the possibilities. I know I am. I have just now effectively retired from the university and traveling for the next two months seems very natural. So, I will be thinking about the desert while enjoying the Pacific Northwest.



ASURA's 2007-2008 year has already begun. I want to welcome the new board members, committee chairs, dedicated committee members and active members. Among our highest priorities are: increasing enrollment, improving communications, and expanding opportunities for group activities. Volunteers are needed as we do still have positions to fill. I ask for your continued support, good ideas, and efforts toward making this a successful year. Don't hesitate to send me email (doug.johnson@asu.edu).

We have much to do if we are to build on the successes of the past and meet the needs of the membership.

Health Insurance and legislative liaison activities continue to command high interest from our members. We expect plan changes and an open reenrollment for ADOA health insurance in the near future.

There are also new recommendations for retirement payouts, and recent stock market volatility raises new questions for those managing their retirement portfolio. We need to continue learning and get better at sharing our knowledge and skills.

I look forward to seeing you in the fall.

Doug Johnson

President 07-08

On the Inside

ASURA Past Presidents.....	Page 1
Retirees Day 2007.....	Page 1
Officers, Board Members, Committees	Page 2
New Board Members.....	Page 3
Calendar of Events	Page 4
Remembering Gale Richards.....	Page 4
Remembering President Swetman.....	Page 5
Health Insurance.....	Page 6
Photos of ASURA Activities	Page 7
History update of Sanitarium.....	Page 8
Video History Update.....	Page 8
Tri-University Retirees Coalition.....	Page 8
Obituaries.....	Page 9
New Members	Page 11

